

THE SENIOR CENTER
TOWARD THE FUTURE:
REVIEW OF SITE OPTIONS
NEAR ARMS ACADEMY

Supported by Ashfield, Buckland & Shelburne

March 25, 2019

JWA JONES WHITSETT
ARCHITECTS

March 25, 2019 2

Agenda

- Background & History
- Existing Conditions
- Programming
- Process – and Options
- Review of Locating the Building near Arms Academy
- Next Steps

JWA

March 25, 2019 3

BACKGROUND & HISTORY

JWA

March 25, 2019 4

The Senior Center: History & Mission

- Established in approximately 1970 at a storefront on Bridge Street. Moved to Community Center and back to Bridge Street.
- Moved to Masonic Lodge in Shelburne Falls in 1984
- 4 Town Consortium formed in 1987
- 3 Town Consortium supported by Ashfield, Buckland and Shelburne (since 2012)

"The mission of the Senior Center and member Councils on Aging is to enrich the lives of residents in the community as they age by designing support networks, identifying and meeting their needs and interests, and providing services and programs in welcoming, respectful, and safe environments."

JWA

March 25, 2019 5

Funding

- Senior Center Foundation formed in 2014
 - Obtained 501(c)3 status
 - Researching grant opportunities
 - Soliciting donations
 - Planning for a Capital Campaign is underway
 - An annual appeal currently supports programming
- Public Funding
 - Additional funds provided by the three member towns
 - Public grants and funding

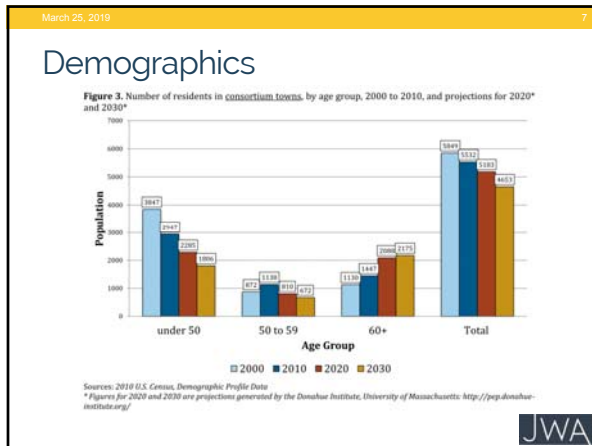
JWA

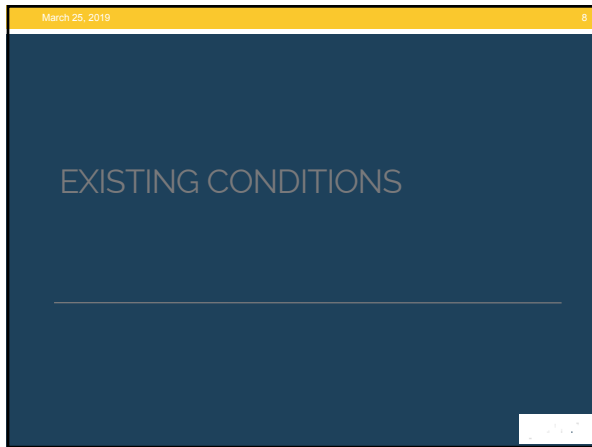
March 25, 2019 6

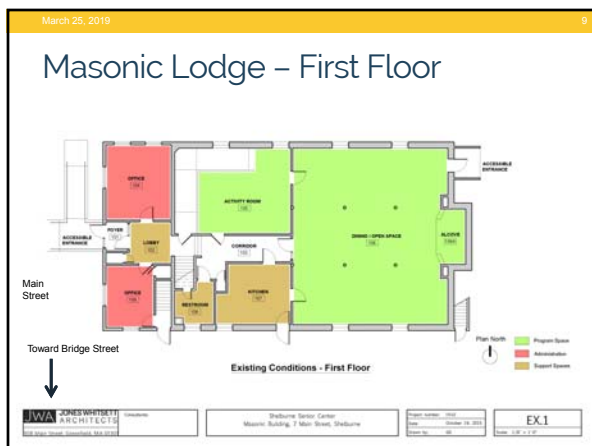
Role of Senior Center

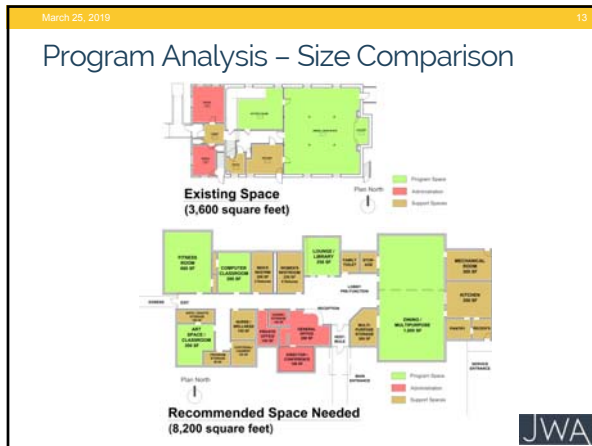
- Neighbor to Neighbor Assistance Program
- SHINE Program
- Outreach Services
- Legal / Professional Services
- Nursing / Medical Services
- Personal Enrichment and Recreational Activities
- Nutrition Programs
- Transportation Programs
- Veterans Services Counseling
- Social and Support Groups
- Physical Activity Programs
- Safety / Reassurance Programs
- Monthly Newsletter
- Website

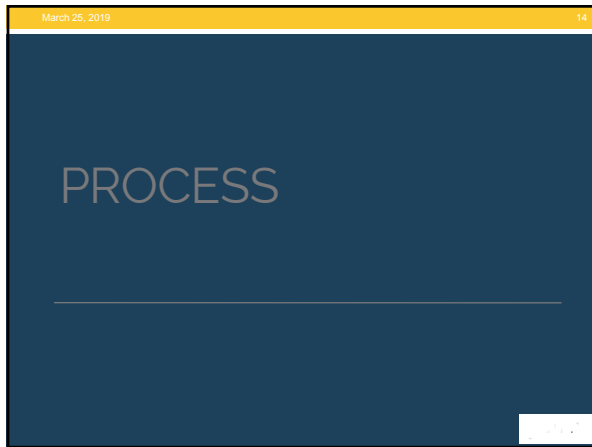
JWA












-
- March 25, 2019 15
- ### Process – Steps Taken
- Ranking criteria listed
 - Multiple reviews by Site Committee & Expansion Committee
 - Contract work with JWA
 - Site Visits
 - Scores generated
 - 1-5 points – multiplied to give a "weighted score"
 - Other high ranking sites eliminated due to unavailability
- JWA

March 25, 2019 19

Public Feedback to February Public Forums


Rankings before Forums		Weighted Rankings after Forums	
• 1. Mole Hollow	111	• 1. Arms Lot	174
• 2. Arms Lot	106	• 2. Mechanic & Church St.	116
• 3. Buckland Police Station	105	• 3. Mole Hollow	66
• 4. Mechanic & Church	89	• 4. Buckland Police Station	54

• Updated rankings reflect public feedback related to parking and traffic concerns at the Mole Hollow Site, as well as land acquisition concerns at Mechanic Street; and sites to be eliminated based upon survey feedback.



March 25, 2019 20

Arms Academy Site – Most Promising Site based upon Public Feedback




Existing Arms Academy Building – Current Shelburne Historical Society

Former Science Building Location – Potential Senior Center Location

March 25, 2019 21

Space Adjacent to Arms Academy


Pros	Cons
<ul style="list-style-type: none"> • Availability of Site • Large areas of open space adjacent to the site • Located close to Cowell Gym and Highland Village • Potential for Trinity Church & Cowell Gym shared parking • Opportunity for shared programs associated with Trinity Church, Cowell Gym & Historical Society • Possible physical connection to the Arms Academy Building including possibility of shared elevator 	<ul style="list-style-type: none"> • Not directly close to downtown • Careful coordination with Historic Society needed - Arms Academy is owned by the Shelburne Historical Society - 15 feet in all directions. • Parking lot at the north is well used by the community for events at Cowell Gym, Kelleher Funeral Home, spring baseball and softball games, etc.



March 25, 2019 22

Sizing the Building at the Arms Academy Site

- Building should be approximately 8,200 SF to house all required program space and associated administration and support space.
- While there are options for shared programming with Cowell Gymnasium and Trinity Church, exercise programs and meal programs will need to be sited directly at the Senior Center Building
- All program space under one roof will be most efficient for staff and patrons of the Senior Center.
- To limit the footprint at various locations near Arms Academy, the new Senior Center will encompass two floors.



March 25, 2019 23

Arms Academy Site – Neighborhood Context



Arms Academy Building



Smith-Kelleher Funeral Home



34 Severance Street



Trinity Church



42 Church Street

March 25, 2019 24

Arms Academy Site – Material Research – Building Materials and Detailing Precedents




Examples of brickwork designed by JWA



Masonry and metal shingle detailing by JWA

March 25, 2019 25

Arms Academy Site – Material Research – Building Materials and Detailing Precedents




Examples of materials incorporating historic context and modern materials

Masonry, stone and clad siding

March 25, 2019 26

Arms Academy Site – Material Research – Building Materials and Detailing Precedents




Example of façade incorporating stone masonry, with wood and glass

Brick masonry, stone and clad wood siding

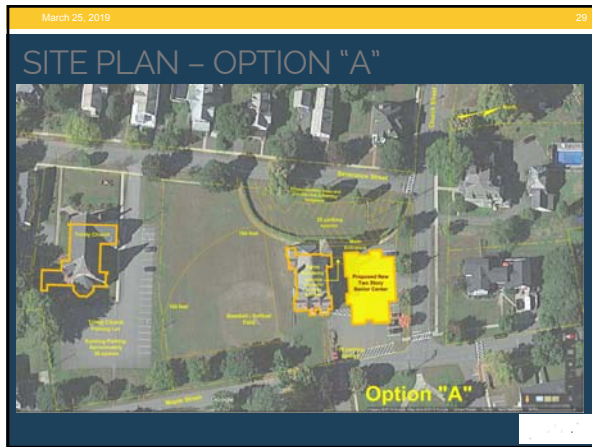
March 25, 2019 27

FOUR POTENTIAL LOCATIONS

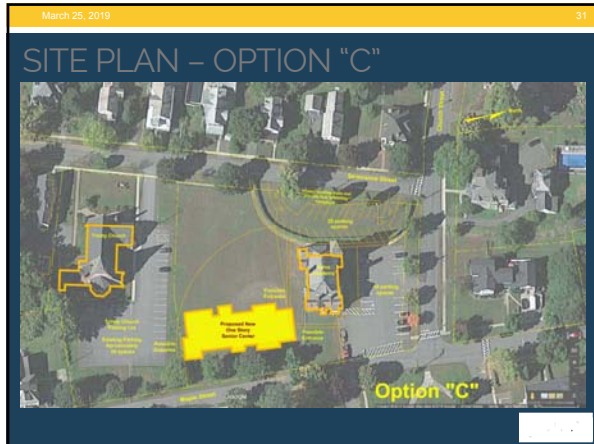
"ARMS ACADEMY" SITE



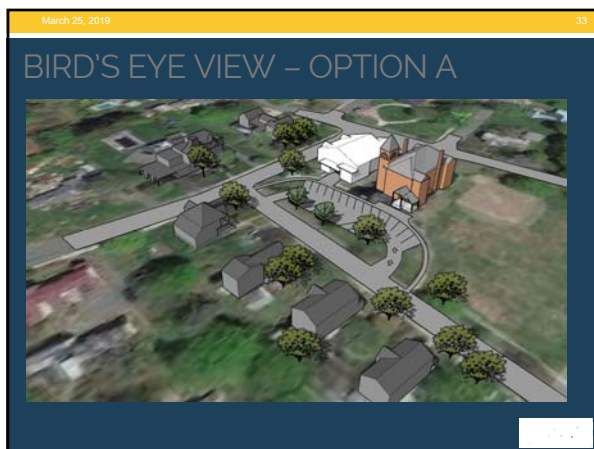




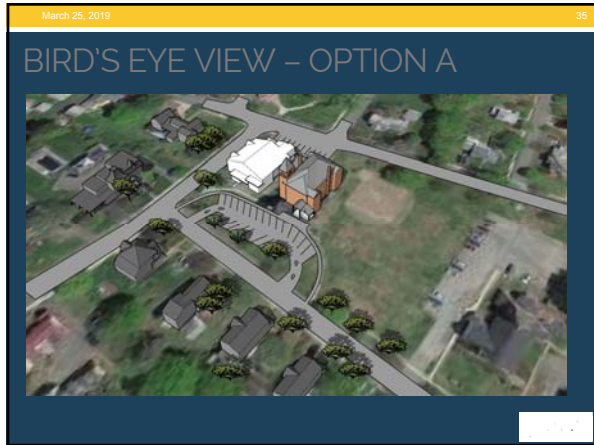


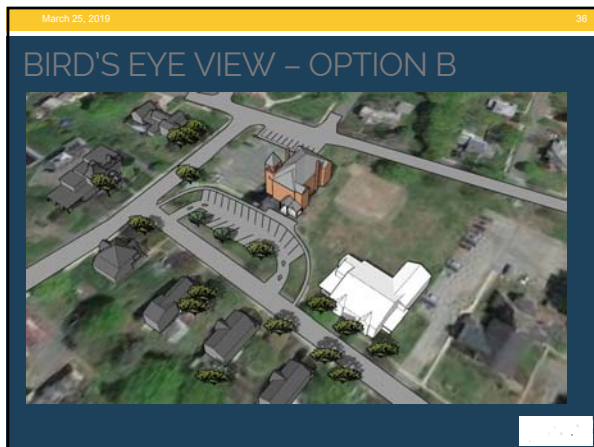


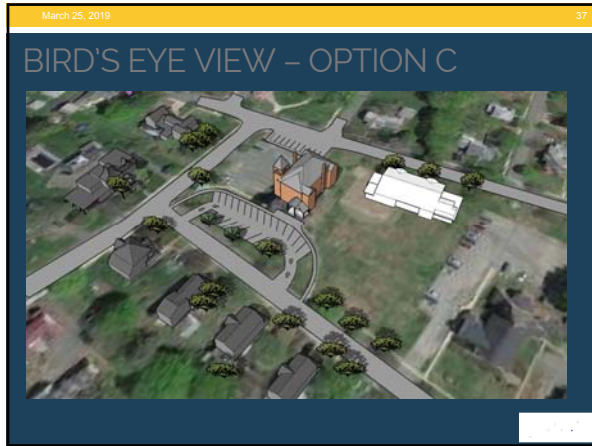


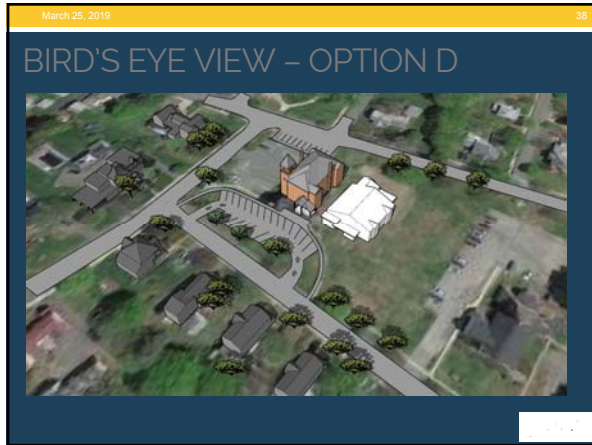


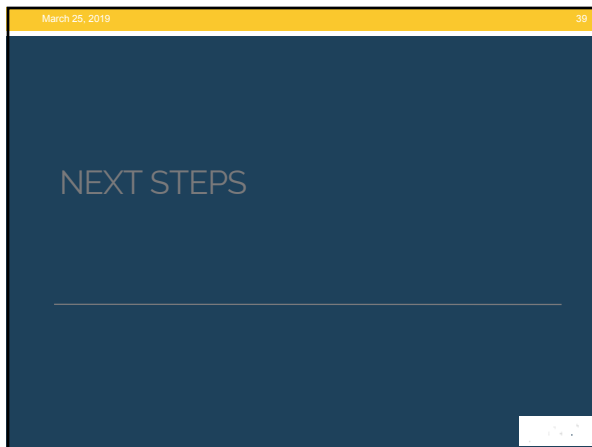













March 25, 2019 40


Next Steps

- Solicit input – In Progress
 - Public Forum at Senior Center – Thursday, Jan. 24, 2019 at 6:00 pm (completed)
 - Public Forum at Mohawk High School – Tuesday, Feb. 19, 2019 at 7 pm (completed)
 - Public Forum at Senior Center – Monday, Feb. 25, 2019 at 2:30 pm (completed)
 - **Public Form at Senior Center – Monday, March 25, 2019 at 6:00 pm – to discuss Options near Arms Academy Building**
 - Stakeholders, Board of Selectmen, Finance Committees, SCEC, SCBoD
 - Websites, Towns and Senior Center – **Survey to fill out**
- Member towns and Senior Center choose the best option
 - Additional Public Forums
- Apply for design phase funding
- Start private fundraising & construction grants through the Senior Center Foundation
- Town capital planning




March 25, 2019 41

THANK YOU!



March 25, 2019 42

BIRD'S EYE VIEW – OPTIONS A-D



Option A Option B

Option C Option D

