

Town of Shelburne

Seven Year Action Plan

Open Space and Recreation Plan 2014-2021

Goal I

Ensure that the Town of Shelburne sustains its rural, agricultural, historic, and small town character.

Actions:

- Further refine and promote best communication strategies to keep landowners aware of current information and resources addressed by this objective.
- Prepare town-wide inventory of public and private forest resources and identify the largest blocks of forest land.
- Organize periodic forums/workshops for farm/forest owners to provide an opportunity for the exchange of information, concerns and possible solutions to challenges facing landowners.
- Identify and prioritize cultural and historic landscape features including roads and corridors and structures for public or private protection.
- Work with the town and state highway departments to respect the rural character and natural resources of the town while engaged in roadwork.
- Research available strategies to protect rural character and natural/historical resources, including zoning and non-zoning options, and identify appropriate strategies for the Town of Shelburne.
- Propose subdivision regulations to allow and encourage development that preserves open space and natural resources.
- Engage Route 2 landowners and town citizens in discussions about strategies to address the current inconsistency that the Route 2/Mohawk Trail corridor is designated as both a Scenic Byway and a commercially zoned strip.
- Identify and pursue state and private grants for the protection of open space that are appropriate and applicable to Shelburne's OSRP goals.
- Explore the adoption of the Community Preservation Act, including holding public forums to discuss the pros and cons of the CPA for the Town of Shelburne.

Goal II

Ensure That The Town Of Shelburne Maintains And Improves The Quality Of Its Significant Natural Resources Including: Rivers, Ponds, Streams, Aquifers, And Wetlands; Drinking Water Supplies; Clean Air; Native Wildlife Populations And Plant Communities.

Actions:

- Identify wetland resources that would benefit from conservation.
- Identify, prioritize, and secure (through public and/or private protection) potential public water sources and surrounding watershed areas.
- Provide home/landowners with information on best practices to use to protect water supplies.
- Identify and prioritize land critical for wildlife/native plant communities/rare species for public or private protection.
- Work with willing landowners to pursue funding and actions for land protection. (See Goal I, Objective #5).

Goal III

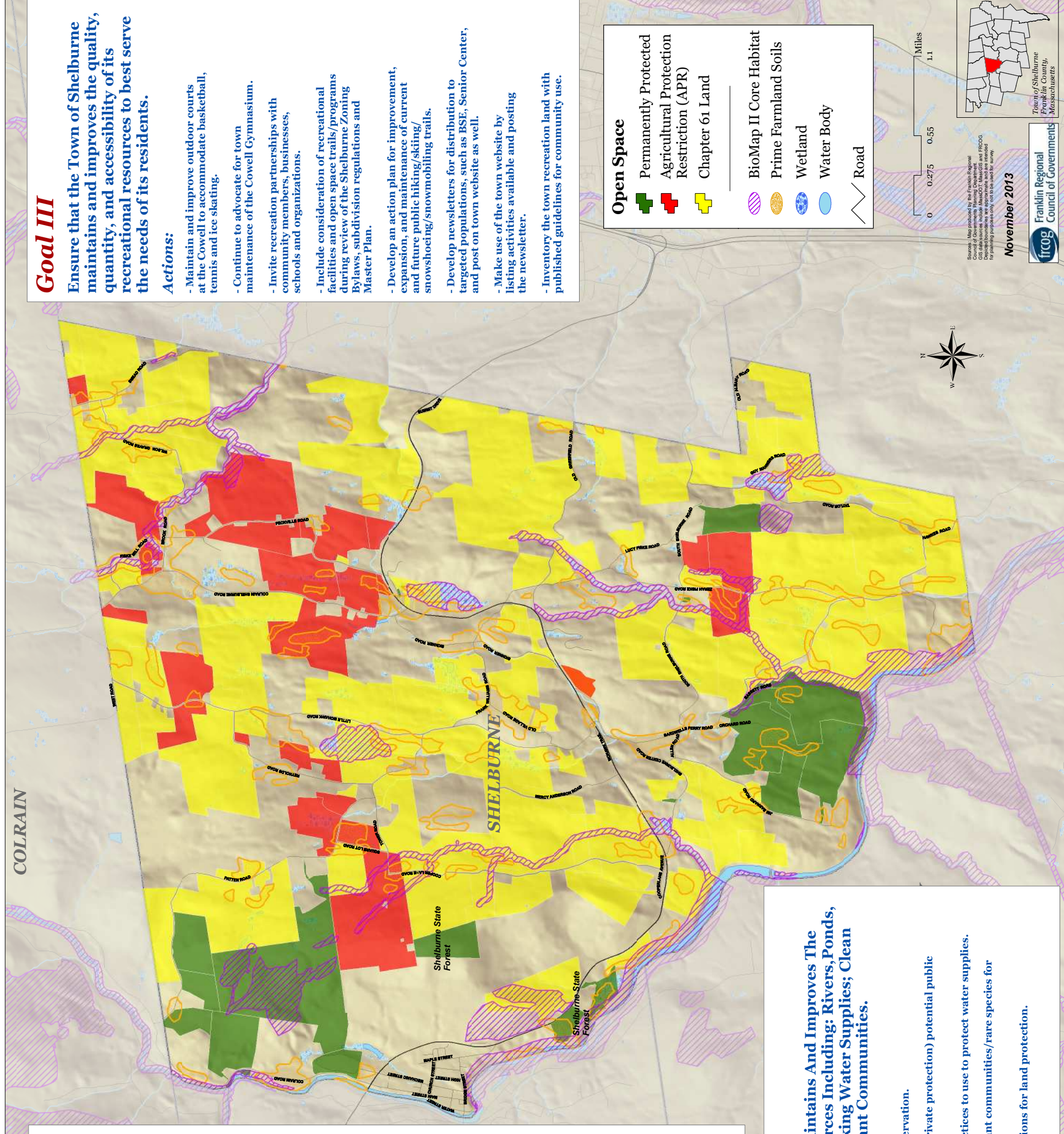
Ensure that the Town of Shelburne maintains and improves the quality, quantity, and accessibility of its recreational resources to best serve the needs of its residents.

Actions:

- Maintain and improve outdoor courts at the Cowell to accommodate basketball, tennis and ice skating.
- Continue to advocate for town maintenance of the Cowell Gymnasium.
- Invite recreation partnerships with community members, businesses, schools and organizations.
- Include consideration of recreational facilities and open space trails/programs during review of the Shelburne Zoning Bylaws, subdivision regulations and Master Plan.
- Develop an action plan for improvement, expansion, and maintenance of current and future public hiking/skiing/snowshoeing/snowmobiling trails.
- Develop newsletters for distribution to targeted populations, such as BSE, Senior Center, and post on town website as well.
- Make use of the town website by listing activities available and posting the newsletter.
- Inventory the town recreation land with published guidelines for community use.

Open Space

- Permanently Protected
- Agricultural Protection Restriction (APR)
- Chapter 61 Land
- BioMap II Core Habitat
- Prime Farmland Soils
- Wetland
- Water Body
- Road



0 0.275 0.55 1.1 Miles

Source: Map provided by the Franklin Regional Council of Governments Planning Department. GIS data source: MassDOT, Massachusetts and FRCOG. This map is for informational purposes only and should not be used for survey.

November 2013

Franklin Regional Council of Governments



Town of Shelburne
Franklin County,
Massachusetts

