

Shelburne Town E-Newsletter – October, 2022

Updated Version!

Hello friends in Shelburne and beyond: This month I erroneously left out a Shelburne Falls Women’s Club program taking place on October 19 – see below. Apologies – it got missed as I scrolled the September email pile.



Last month I wrote erroneously about my beloved “lupines” heralding in the fall only to learn that they are actually named “obedient plants” or “false dragonheads.” I was expecting an avalanche of emails from outraged Shelburne gardeners, but you are clearly either too busy gardening or much too polite to correct a novice like me!

Here is the October scoop in Shelburne – a timely energy workshop for the winter heating season, Iron Bridge closing dates, a pickle ball demo, bulky waste recycling day, flu clinics nearby, a great guided hike and much more. Read on!

Help me spread the Shelburne e-news. Forward this newsletter to a few friends and encourage them to subscribe. Subscribers can join by sending me their name and email address to andrewbaker1959@gmail.com You don’t have to live in Shelburne to subscribe, but do let me know what town you do live in.

Andrew Baker - Interim Newsletter Editor & Shelburne Select Board member

Shelburne Falls Women’s Club sponsors public program about Lucy Terry Prince

Wednesday, October 19 at 7:00 pm at the Shelburne-Buckland Community Center, 53 Main Street, Shelburne Falls

“Bearing Witness and the Endurance of Voice” a program about the life of Lucy Terry Prince, early Deerfield slave and first known African-American poet, is scheduled for 7 p.m. on Wednesday, October 19, at the Shelburne-Buckland Community Center, 53 Main Street in Shelburne Falls.

The program, funded and sponsored by the Shelburne Falls Area Women’s Club, is open to all, including club members, guests and anyone interested in the subject. There is no admission fee but donations to the club’s Scholarship Fund for local students are welcome.

Lucy Terry Prince was born in Africa, where she was kidnapped by slave traders and transported to Rhode Island. While still enslaved in 1746, in Deerfield, MA, she wrote “Bars Fight,” the oldest known poem in the United States written by an African American. Prince later regained her freedom and moved to Vermont with her husband, Abijah Prince, and fought for her family’s land rights all the way to the highest court in Vermont.

In this presentation, Shanta Lee illustrates Prince’s importance as a poet and orator, and as one unafraid to fight for her rights within the landscape of New England, and America. She will also perform Lucy’s only surviving poem, “Bars Fight.”

Shanta Lee gives lectures on the life of Lucy Terry Prince (c. 1730-1821) as a member of the Vermont and New Hampshire Humanities Council Speakers Bureaus. Shanta Lee is the 2020 recipient of the Arthur Williams Award for Meritorious Service to the Arts. She has an MFA in Creative Non-Fiction and Poetry at the Vermont College of Fine Arts. She also has an MBA from the University of Hartford and an undergraduate degree in Women, Gender and Sexuality from Trinity College.

The SF Area Women’s Club was founded in 1925 and continues to oversee the Bridge of Flowers as well as sponsoring local student scholarships and other community projects. Membership in the club is open to all women in the area. Dues are \$25 annually.

Shelburne Energy Committee: Workshop at Senior Center on October 4

Make Your Home More Comfortable and Save Money!

Tues. Oct. 4, 5:00 - 6:30 pm at the Shelburne Senior Center

Are you worried about the rising cost of your home heating oil or propane? Feeling that winter draft? House too hot in the summer? Do you wish you could personally make a difference about climate change?

Come attend a presentation by the Shelburne Energy Committee to learn how a no-cost home energy assessments offered by Mass Save sponsors can help. Learn what an assessment entails and how it can lead to a positive impact on your comfort and your wallet! There are many no-cost or low-cost incentives and rebates on energy efficient measures that could be appropriate for your home. These include sealing air leaks, installing insulation to the attic or house walls, adding heat pumps (mini-splits), and replacing old appliances with energy efficient ones, just to name a few.

Tuesday, October 4, 2022 from 5:00- 6:30 pm. Taught by Cynthia Boettner, the Shelburne Energy Efficiency Advocate. We will meet in the large room at the Senior Center, 7 Main St., Shelburne Falls. Limited to 20 attendees to adequately distance. Masks required. **Call 413-625-2502 to register.**

Request from the Cynthia Boettner, Energy Efficiency Advocate with the Shelburne Energy Committee:

Hello Shelburne Residents and Small Business Owners:

I have a special request of those of you that have had a Mass Save energy assessment within the past two years. I'd love to hear from you to be able to better guide other residents as they consider the program—and also to provide valuable feedback to Mass Save to improve or add to the program. How did your assessment go? Did you follow through with the recommended upgrades? If so, have they made a difference in your fuel needs? If you haven't followed through with recommendations, what stumbling block is keeping you from moving ahead? If you know what contractor did the work, what did you think of them? What other opinions would you like to relay? Your honest feedback will help me be a better advocate for Shelburne residents and small business owners, as well as provide feedback to Mass Save to make the program even better. Your feedback will remain confidential, but if you'd like to provide a testimonial, that's great, too! Please write or call me at Cynthia.boettner1@gmail.com or 413-325-5564.

And, for those of you that have not had an energy assessment in the past two years, you are eligible! Our Shelburne-specific registration link and phone number are: www.masssave.com/shelburne, 413-232-9922. Please contact me with any questions you may have. (Know that the "Get Started" button at that link takes you directly to registering for an assessment. Scrolling below that takes you to all of the incentives.) Thank you!



Shelburne Recreation Committee presents: Pickleball Demo on October 16!

Come try the fastest growing sport in the U.S. Find out what the buzz is all about, watch some games and then pick up a paddle and give pickleball a try! The demo is free, open to all ages and no sign ups required.

*Watch for upcoming announcements for lessons and play sessions

PICKLEBALL DEMO on Sunday, October 16 at 11:00 am at the Outside courts next to Cowell Gym at 51 Maple St Shelburne Falls. Questions about pickleball demos, lessons or play?

Contact Mary Lou Gallup at 207-530-6316 or email shelburnefallspickleball@gmail.com

Lessons <https://www.signupgenius.com/go/10C0F48AEA728A2F5C61-lesson>

Play <https://www.signupgenius.com/go/10C0F48AEA728A2F5C61-pickleball1>

Here is a great article about the game: <https://www.newyorker.com/magazine/2022/07/25/can-pickleball-save-america>

Highway Department News

Little Mohawk Road – Re-paved! Four miles of newly paved road going from Route 2 to the Patten to Colrain. The Highway crew is now finishing up the edging work on the embankments.

Iron Bridge repaving & repair – **Tentatively scheduled for the week of Nov. 14.** Mass. Dept of Transportation will repave the Iron Bridge deck if the weather cooperates. The project will take approximately one week and will close the bridge to traffic. Repair of the sidewalk has not yet been scheduled.

Town Clerk News: Shelburne Town Charter is back in town!

Wanted everyone to know, before it potentially appears in the Recorder, that the Town Charter which originated as a petition from the early settlers of what would eventually become *Shelburne*, to then Prime Minister William Petty, 2nd Earl of Shelburne, which was supported by him and, eventually, by King George III, and acted upon by the Colonial Legislature on June 7, 1768, and then signed by Governor Francis Bernard of the Massachusetts-Bay Colony on June 21, 1768, which then was enacted into law thus incorporating the North-Westerly part of Deerfield, in the county of Hampshire, into a district of which would be called *SHELBURNE*, is now safely in my office!

Early Voting Work Schedule – November 2022 State Election

Location: Shelburne Town Hall, 51 Bridge Street, Shelburne, Massachusetts

Dates and hours:

| | |
|------------------|------------------|
| October 22, 2022 | 10:00am – 2:00pm |
| October 24, 2022 | 11:00am – 1:00pm |
| October 27, 2022 | 2:00pm – 4:00pm |
| October 29, 2022 | 10:00am – 2:00pm |
| October 31, 2022 | 11:00am – 1:00pm |
| November 3, 2022 | 2:00pm – 4:00pm |
| November 4, 2022 | 11:00am – 1:00pm |

Town Clerk / Chief Elections Official

Shelburne Senior Center News: Essay by Director, Juli Moreno

Re-imagine 60+ Living and Pursue what Matters Most



When I was young, I thought 30 was ancient. Turning 40, I placed so much stress on turning 50 that at 50 I was disappointed by the lack of life changing events. As I move toward 60 something has changed. I no longer see “the end” as the inevitable, but rather as a time for new possibilities. When you witness many people 60-100 years old exploring new opportunities, working with what life has dealt and taking charge of their own next chapter, it is inspiring. When you hear “senior citizen” many images run through your head, not all positive. Medical issues and insurance become a priority, yes, but managing health and

finances can provide you with the freedom to pursue what matters to you most. Shouldn't there be a payoff for all the years working, raising children, managing everyone's needs? Yes. It's a matter of shifting gears. Even if, like me, you work far past retirement age!

The Senior Center is a community access point. Recliners and putting your feet up is not what retirement is about anymore. Even a working senior can explore options. You have access to social, medical, and educational resources. You have a voice and an opinion; all are welcome at the Center. Think of us as a “sampler” and resource hub. You can

volunteer time and energy based on what you love and have life experience with, in a way you didn't think would be valuable. You could alter a person's life.

If you want some medical advice, you can connect one on one with a Registered Nurse through our Ask the Nurse program. The Foot Clinics are a hit twice a month in a session with a nurse who will provide podiatry services and ideas for keeping you independent on your feet. The Novel Idea Book Club is a great way to connect with fellow book lovers, the second Wednesday of each month. A wonderful writer has come to town and has offered to do a Creative Writing workshop, so we will launch that soon. We love to share stories and our life events as we get older, and the Memoir group each Friday can get you started on launching your legacy in writing.

During the pandemic life turned upside down, in so many ways, and we are still adapting to these changes. Before my time here up to 60 people came to the Center for a wonderful lunch and social interaction twice a month. Watching the volunteer chefs create a well thought out meal with all the fixings is awesome. Having 60 plus cars drive curbside to get this cool To Go Meal is so rewarding. Knowing that the cucumbers and tomatoes came from our little backyard oasis, nurtured by the gardening volunteers, makes it even more rewarding. Maintaining connections throughout isolation makes a difference. The movies, Bingo, and Knitting Circle provide masked socialization and people finding satisfaction in the midst of restriction. The Senior Learning Network occurs twice monthly. A tour guide from a location Zooms, and we can take a virtual field trip and ask questions, all live. We've gone to Joshua Tree Desert, the St. Louis Arch, and in November visit a museum focusing on Civil War "power couples".

Technology and access to information is a crucial piece of staying current. The Internet Café on Fridays can help you connect, learn how to access sites relevant to your life, and provide you with a Chromebook to explore the platform at your leisure. We have a new Facebook page. View the daily happenings that occur at the Senior center. Check us out at www.facebook.com/MainStreetShelburneFalls. Please like, follow and share. Instagram coming soon!

Outreach Services are crucial to our programming. Fuel Assistance, SHINE insurance issues, home modifications and benefit opportunities are available through a phone call and appointment with our Coordinator. If you take care of grandchildren, we have a resource for you. If you take care of a loved one with dementia, come to our Caregiver Support group. Have a relaxed and non-judgmental good time with entertainment and amazing food at Memory Cafe. Our Home Repair volunteers can help with small jobs for the house, technology, or consult if you need help with a larger home repair. We can also connect you with Mass Save benefits and make cost saving improvements in your home. Our mission is to support you to be as independent for as long as possible by providing resources and a community setting to guide you in the next exciting chapter of life. Making new connections and going outside your comfort zone are side benefits. The Senior Center is community based, and changes depending on the needs and voices of the community. Bring your voice and life experiences to us, we'll appreciate and foster your perusal of the future. Take a sample! You've worked hard. Re-frame your vision of the future.

From Your Emergency Management Director: HURRICANE SEASON (Part 3)

Hello. The hurricane season is definitely upon us, and with a big bang. We saw Hurricane Fiona rumble northeast to the eastern seaboard of Canada and smash into land wreaking havoc. If Fiona's path was just a bit to the west that havoc would have taken place here in New England. As the hurricane season continues, please remember the preparedness necessities I brought to you in the past two issues of this newsletter. Just in case.....

After a brief time off for the summer months, the Emergency Management Committee got back to our monthly meetings on September 15 th . We toured the new Emergency Management office in the town's Municipal Building/Police Station on the Mohawk Trail. We now have a functional office that will also serve as the emergency operational center during any disaster incident. The agenda is full of tasks that, when completed, will improve our preparedness posture for any future disasters that may come our way. Our meetings are held in the evening the third Thursday of each month. Visitors are certainly welcome at our meetings.

Remember, failing to plan is planning to fail. Tom Williams, Emergency Management Director

Fall “Clean Sweep” Bulky Waste Recycling Day

Franklin County Solid Waste Management District is holding its Fall “Clean Sweep” Bulky Waste Recycling Day on **Saturday, October 22 from 9 a.m. to noon**. The three drop-off sites are: **Mohawk Trail Regional School at 26 Ashfield Rd. (Route 112 South)**; Northfield Highway Garage at 49 Caldwell Rd; and Whately Transfer Station at 73 Christian Lane.

Residents from any District town may bring bulky items such as tires, appliances, scrap metal, furniture, mattresses, carpeting, construction debris, computers, televisions, propane gas tanks, and other large items. Materials will be recycled whenever possible.

There are charges for most items. Disposal fees, cash only, will be collected during check-in at each site. A complete list of prices for the most common items is at: <https://franklincountywastedistrict.org> . The price list will also be provided to participating town halls and transfer stations. Residents and businesses do not need to pre-register for the collection.

Electronics are accepted at the event, but residents are also encouraged to recycle computer equipment and televisions at their town’s transfer station, or at Greenfield Transfer Station. Staples stores accept computer equipment (no TVs) free of charge: call your local store for details. Clean, dry textiles and books are accepted for free at this collection. Textiles must be contained inside a sturdy plastic bag. 95% of all textiles can be recycled or reused; clothing or linens that are torn, stained, with missing buttons or broken zippers can be recycled into insulation. Acceptable items include CLEAN & DRY clothing, shoes, and accessories; plus curtains, sheets, towels and stuffed animals in any condition (except moldy or wet). Books can be in any condition except moldy or wet, and can be hardcover or paperback. No encyclopedias.

Bulky Rigid Plastics will be collected separately for a special recycling program; \$5 per load. Acceptable items for this special recycling program are limited to these items only: 5-gallon pails, plastic lawn furniture, plastic trash barrels, recycling bins, laundry baskets, storage totes, and milk crates. Bulky rigid plastic items must be empty and free of batteries, soil, rocks, and liquids.

For more information, contact the District office at info@franklincountywastedistrict.org or 413-772-2438. MA Relay for the hearing impaired: 711 or 1-800-439-2370 (TTY/TDD). The District is an equal opportunity provider.

Special Town Meeting on October 17

Meet at the Buckland-Shelburne Elementary School, 75 Mechanic Street in Shelburne Falls on **Monday, October 17, 2022, at 5:30 pm** to act on the following articles:

ARTICLE 1. To see if the Town will vote to amend the MOHAWK TRAIL REGIONAL SCHOOL DISTRICT – REGIONAL DISTRICT AGREEMENT by striking the following language contained in Section IV (E) – Apportionment of Capital Costs Grades pre-K–6:

(3) The Heath Elementary School Building shall be returned to the Town of Heath on July 1, 2017, and the Lease between the parties shall terminate as of said date. In exchange for termination of the lease, the District shall pay to the Town of Heath a total sum of \$240,000.00, such payment to be made in no fewer than three (3) annual installments. The amounts and timing of such installments shall be as agreed upon in writing by the School Committee and the Town of Heath, provided however that the final installment shall be due no later than June 30, 2020. Any outstanding debt payments associated with the Heath Elementary School shall remain the responsibility of the Town of Heath, and the Town of Heath shall continue to be assessed for said debt in accordance with the terms of this Agreement.

(4) Capital costs representing payments of principal and interest on bonds, notes or other obligations as issued by the Committee to finance expenses in the nature of capital outlay for the purpose of construction at the site of, or reconstruction to, the Colrain Central School or upon any premises as may be leased to the Mohawk Trail Regional School District by the Town of Colrain, shall be borne by the Town of Colrain.

(5) Nothing in this section shall be construed to prevent the member towns from amending this Agreement and modifying and/or altering the above designated schedules of apportionment of capital costs in the event subsequent school construction or reconstruction results in a change of grade level or town assignments to the District schools.

and replacing said language with the following:

(3) Colrain, Heath

Effective commencing with Fiscal Year 2023, new capital costs incurred by the committee and associated with grades pre-Kindergarten to six, inclusive, of the District school or schools serving the pupils from the Towns of Colrain and Heath shall be apportioned to the Towns of Colrain and Heath as follows:

To Colrain: A portion of the total of all principal and interest on bonds, notes or other obligations as issued by the Committee consistent with the above, expressed as a percentage of the total to the nearest one-hundredth of one percent calculated as follows: By (1), computing the ratio which the sum of the enrollments of pupils at the Colrain Center School, resident in the Town of Colrain as determined by the census of pupils at said district school each October 1 for the five most recent years, bears to the sum of enrollments of pupils at said district school, resident in the Towns of Heath and Colrain, as determined by the census of pupils each October 1 for the five most recent years (note: pre-K enrollment will be included in the calculation); and by (2) expressing such ratio as a percentage. Until five years of data becomes available, the most recent years of data shall be used to determine said ratio.

To Heath: A portion of the total of all principal and interest on bonds, notes or other obligations as issued by the Committee on or after July 1, 2022 consistent with the above, expressed as a percentage of the total to the nearest one-hundredth of one percent calculated as follows: By (1), computing ratio which the sum of the enrollments of pupils at the Colrain Central School, resident in the Town of Heath, as determined by the census of pupils at said district school each October 1 for the five most recent years, bears to the sum of enrollments of pupils at the said district school, resident in the Towns of Colrain and Heath, as determined by the census of pupils each October 1 for the five most recent years (note: pre-K enrollment will be included in the calculation); and by (2) expressing such ratio as a percentage. Until five years of data becomes available, the most recent years of data shall be used to determine said ratio.

(4) The Heath Elementary School Building was returned to the Town of Heath on July 1, 2017, and the Lease between the parties terminated as of said date. In exchange for termination of the lease, the District paid to the Town of Heath a total sum of \$240,000.00. Any outstanding debt payments associated with the Heath Elementary School shall remain the responsibility of the Town of Heath, and the Town of Heath shall continue to be assessed for said debt in accordance with the terms of this Agreement.

(5) Capital costs representing payments of principal and interest on bonds, notes or other obligations as issued by the Committee to finance expenses in the nature of capital outlay for the purpose of construction at the site of, or reconstruction to, the Colrain Central School or upon any premises as may be leased to the Mohawk Trail Regional School District by the Town of Colrain, shall be borne by the Towns of Colrain and Heath, as provided in Section E. (3), above.

(6) Nothing in this section shall be construed to prevent the member towns from amending this Agreement and modifying and/or altering the above designated schedules of apportionment of capital costs in the event subsequent school construction or reconstruction results in a change of grade level or town assignments to the District schools.

ARTICLE 2. To see if the Town will vote to amend the MOHAWK TRAIL REGIONAL SCHOOL DISTRICT – REGIONAL DISTRICT AGREEMENT by striking the following language contained in Section XV Effective Date:

This amended Agreement shall take full effect in accordance with its terms on July 1, 2018 and shall supersede the prior District Agreement, including any prior amendments.

and replacing said language with the following:

This amended Agreement shall take full effect in accordance with its terms on July 1, 2022 and shall supersede the prior District Agreement, including any prior amendments.

Shelburne Farmers Market – October News

The Shelburne Falls Farmers Market will be continuing thru October on Friday afternoons, 2pm to 6pm, on the green: corner of Water and Main Streets. Fall vegetables have come in nicely despite the dry summer. Pumpkins, winter squashes, peppers, hops, and honeycomb are among the newest Fall offerings. Greens, roots, herbs, onions, and other local vegetables remain in abundant supply. Meats for your Fall gatherings are available: beef, lamb, pork, and chicken. Local crafts include: soy candles, sheepskins, hand tooled leather items, handspun yarn in natural and dyed colors, woolen handwear and socks, photo gift cards, and plants or flowers (if the frost doesn't come too soon). If you are in need of some relaxing bodywork, Margaret Olin's Healing Bodywork is also available.

Thank you for supporting our local farms and artisans. Please stop by. Also, **save the date of November 20** (the Sunday before Thanksgiving) for the **Shelburne Falls Autumn Market**: one stop shopping for local gifts, Fall vegetables, and holiday supplies. For more info please visit: shelburnefallsfarmersmarket.org.

Intro to Improv Workshop on October 8: Free Improvisation for self-expression

David Rudge leads this interactive workshop for people of all Levels of musical experience, from beginners to professionals, who want to express themselves fully with sound, to have a playful experience with music, to find their song, groove, voice, creativity and to experience a musical community:

Sat, Oct, 8, 1 to 4pm Shelburne-Buckland Community Center 53 Main St., Shelburne Falls, MA Cost: \$60 Info: Rosie Fanale at rfanaleo8@gmail.com or 413 489 3142 No musical or improvisation experience necessary!

David Rudge, a violinist and conductor, has taught Free Improvisation for over 30 years internationally, to all age groups and experience levels. He was the Founder and Director of The Improv. Collective at SUNY Fredonia, Director of Musicianship for Music for People. (www.musicforpeople.org), and a performer with Paul Winter, Paul Horn, and David Darling. As a part of the Human Potential movement he has inspired countless people to find their own music with the transformative belief that everyone is musical. For more information, see www.nowrongnotes.com.

Town Treasurer/Collector News:

Find updates here: <https://townofshelburne.com/p/24/Tax-Collector-and-Treasurer>

Friends of the Arms Library Fall Book Sale

Will be held on the holiday weekend of **October 8, 9, & 10 from 10a.m. -2p.m.** Location: under the tent in back of the library. Pay What You Wish (& please be generous because every dollar goes toward programs and more help for our wonderful library)

Clothes Closet Alert: Where is the right place to donate clothing?

Here are the places to donate clothes to the Clothes Closet (located in the basement of Cowell Gym): Neighbor's in Buckland, in the container front of the Cowell Gym, and at the Transfer Station.

Please do NOT leave clothing at the Highway Garage or Town Shed.

Open Space Committee: Guided Hike along the Wooded Loop Trails

Saturday, October 8, 9:00 AM, meet at Arms Library

Guided Wooded Loop Trails Hike – The Shelburne Open Space Committee, Arms Library, and Deerfield River Watershed Association have partnered to lead an educational hike to Shelburne’s forestry and wildlife habitat interpretive trail system. A former Natural Resource Specialist/Forester will lead the hike through private lands managed by the Foxbard Farm for both forest products and wildlife habitat. We will learn about the complexities of managing private lands for both personal and public benefit, increasing the variety of wildlife habitats, and see how forests regenerate themselves over time.

What to Bring: Hikers should wear good walking sneakers or hiking boots and bring water to drink, a snack, sunscreen, and treat clothing for ticks. Bring a mask if you intend to carpool. **What to Know:** The hike is fairly easy, but the footing is uneven in many places. Hikers should have a medium level of skill and endurance for this 1 ½ mile loop hike. The hike, including the drive to the trail and back, will most likely take about two hours.



Wooded Loop Trail Kiosk on Old Greenfield Road

Where to Meet: We will first gather on the steps of the Shelburne Falls Arms Library at 9:00 AM on Saturday, October 8th. From there we will all drive or carpool 5.3 miles to the Wooded Loop Trail trailhead located on Old Greenfield Road. Masks are required in carpool vehicles. If you have any questions, or would like to pre- register so that you will be notified in case of a need to reschedule due to rain (likely the next day), contact Jim at: drwa@deerfieldriver.org See you there!

This is the final of four hikes we are hosting for the season with our partners.

Shelburne Cultural Council: 2023 Grant Application Cycle is now open!

The Shelburne Cultural Council is now accepting applications for the 2023 Grant Cycle. Our MCC allocation this year is \$5,500. We support programs in the arts, humanities, and sciences in Massachusetts. This definition includes the study, pursuit, performance, exhibition, and appreciation of cultural activities in the broadest sense. The Mass Cultural Council defines the arts, humanities, and/or sciences as: Arts refer to the creation of work in the crafts and performing, visual, media, folk, design, literary, and inter-disciplinary arts. In addition, they also include the presentation and preservation of, and education about works in these disciplines. Humanities are types of learning that deal with human values and aspirations, human thought and culture, language, and creativity. Examples include, but are not limited, to history, social studies, philosophy, criticism, and literature.

Sciences are types of learning that deal with nature, science, and technology in ways that explain how they relate to people’s lives. Some organizations that conduct this type of activity include aquariums, botanical gardens, nature centers, natural history museums, planetariums, and science centers.

The deadline to apply is **Monday, October 17, 2022**.

For more information and to apply visit: <https://massculturalcouncil.org/local-council/shelburne/>
(Scroll to bottom of page link for Apply button)

From the FRCOG Public Health Team:

Clean water: Wells & Septic October marks the 50th anniversary of the Clean Water Act, which was enacted in 1972. The Act addresses water pollution and is credited with the improvement in water quality nationwide. In our rural environment, wells and septic systems play an important role in a clean watershed. Inspection and testing of private wells and septic is generally only done when a property is being transferred. So, many longtime homeowners may not know what they've been drinking over the last few decades without further water quality testing.

Testing well water quality should be done using a Mass DEP-approved laboratory, a list of which can be found by on the mass.gov. These laboratories offer a variety of water testing packages, looking at bacteria, mineral content, or the presence of chemicals, like PFAS. Changes to water's appearance, smell, or taste can be good reasons to consider a water quality test.

For septic systems, experts recommend regular pumping. One useful resource is the EPA's Homeowners Guide to Septic Systems; (found on the internet) which contains what "regular" means for your type of system. Issues with septic systems can be harder to detect, and the following warrant further consideration: Inside the home, toilets backing up or not flushing or strong odor. Outside the home look for squishy or foul-smelling ground around the system. Both well water quality should be tested and septic pumped within the past 3 years to receive approval for a short-term rental property status.

Fall Vaccination Clinics for Flu and COVID: No-cost vaccination clinics offering both flu and COVID vaccine—including the updated Omicron-specific booster—are scheduled across the county during October. Check eligibility, see schedule sign up online: frcog.org/covid. Please bring your ID, insurance card and vaccination card. You can receive both shots during the same visit. FRCOG public health nurses will carry flu vaccine with them to their Walk-in Wellness clinics and can assist in finding/scheduling vaccinations.

West County Flu & COVID Clinics:

Mon. 10/3 10am-4pm Ashfield Town Hall

Tues. 10/4 2-6pm Mohawk Trail Regional School

Wed. 10/19 2:30-6:30pm Hawlemont Regional School

Thurs. 10/20 12-4pm Rowe Elementary

Wed. 10/26 2-6pm Buckland-Shelburne Elementary

Register by clicking a location above or at www.frcog.org/covid. Bring your health insurance and COVID vaccination cards. You can receive both flu and COVID vaccines on the same visit. Regular and high dose flu vaccine
COVID vaccine: primary series for all ages and boosters
for ages 12+ Omicron-specific (bivalent) boosters for those 12+ who received a shot >2 months ago
\$25 gift cards for every FIRST dose of COVID vaccine

Shelburne Police Dept. News

Shelburne & Buckland select boards will meet jointly on **Tuesday, October 11 at 5:30 pm** in the Buckland Town Hall to launch a communications plan for engaging citizens of both towns in community discussions at a series of town forums regarding creating a shared police service for the two towns. The towns plan to bring a warrant article before the voters at Town Meetings in 2023 on sharing police services. Look for announcements about the first public forum in November.

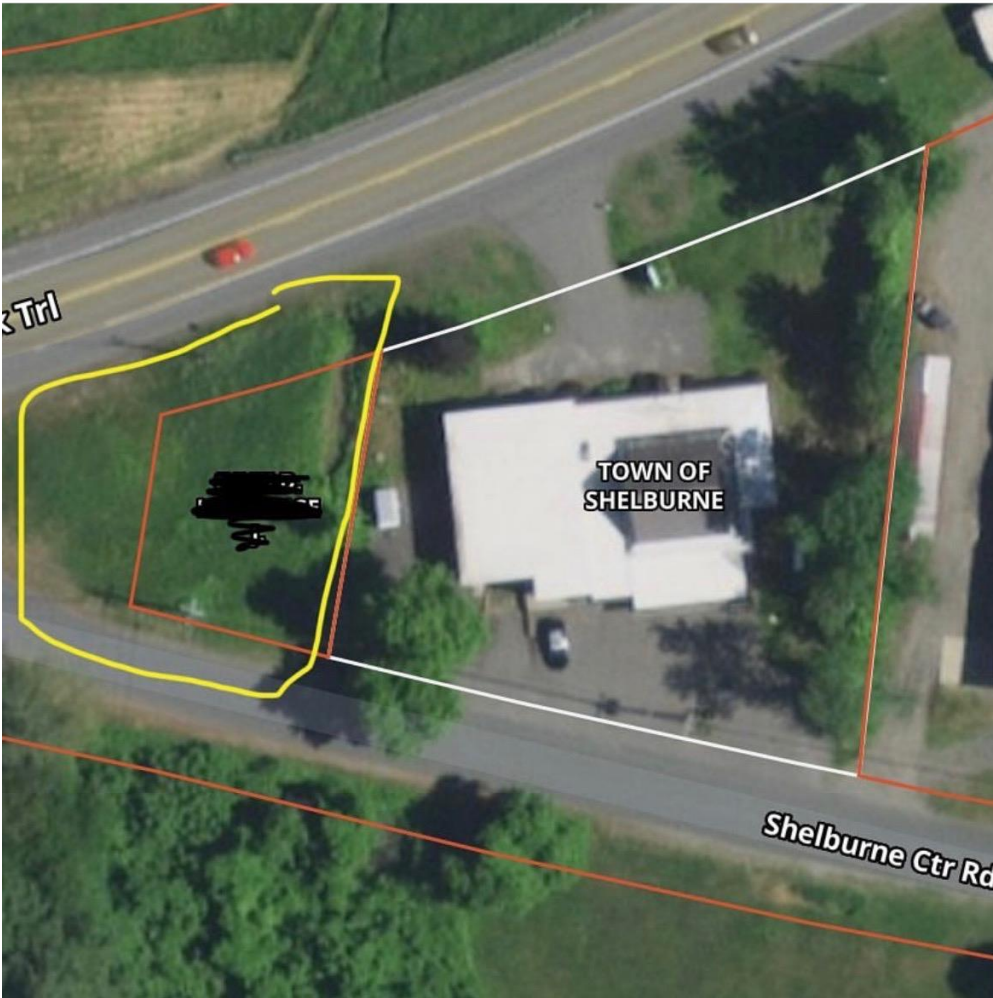
4:09

5G

Instagram



shelburnepolice
Shelburne, Massachusetts



1 like

shelburnepolice Many folks over the last couple weeks have expressed frustration about political campaign signs posted on the grass at what they believe to be town property. Facts: there is a .13 acre lot next to the towns property which belongs to a private citizen. The political signs are posted on this private property and not the property of the town.



Add a comment...



Shelburne Fire Dept News:

Shelburne, Buckland and Shelburne Falls Fire Departments are teaming up with the National Fire Protection Association® (NFPA®) to celebrate the 100th anniversary of Fire Prevention Week™ (FPW), October 9-15, 2022. This year's FPW campaign, "Fire won't wait. Plan your escape™", works to educate everyone about simple but important actions they can take to keep themselves and those around them safe from home fires.

"Today's homes burn faster than ever. You may have as little as two minutes (or even less time) to safely escape a home fire from the time the smoke alarm sounds. Your ability to get out of a home during a fire depends on early warning from smoke alarms and advance planning," said Lorraine Carli, vice president of Outreach and Advocacy at NFPA.

Our local first responders encourage all residents to embrace the 2022 Fire Prevention Week theme.

Fire won't wait. Plan your escape.™

"It's important for everyone to plan and practice a home fire escape. Everyone needs to be prepared in advance, so that they know what to do when the smoke alarm sounds. Given that every home is different, every home fire escape plan will also be different," says Herb Guyette, Fire Chief for Buckland and the village of Shelburne Falls. "Have a plan for everyone in the home. Children, older adults, and people with disabilities may need assistance to wake up and get out. Make sure that they can hear the alarm and someone will help them!"

Shelburne's Fire Chief John Taylor adds these key home fire escape planning tips:

- Make sure your plan meets the needs of all your family members, including those with sensory or physical disabilities.
- Smoke alarms should be installed inside every sleeping room, outside each separate sleeping area, and on every level of your home. Smoke alarms should be interconnected so when one sounds, they all sound.
- Know at least two ways out of every room, if possible. Make sure all doors and windows open easily.
- Have an outside meeting place a safe distance from your home where everyone will meet.
- Practice your home fire drill at least twice a year with everyone in the household. Practice at least once during the day and also at night.

To find out more about fire prevention programs and activities in our area, and/or if you are interested in joining your local fire department, please contact Chief Taylor at 413-625-6796 or Chief Guyette at 413-625-6734.

For more general information about Fire Prevention Week and fire prevention in general, visit fpw.org and sparky.org.

Community Preservation Act will be Question #5 on the ballot November 8

Voters in Shelburne will have the opportunity to vote on whether or not to adopt the Community Preservation Act (CPA) in Shelburne at the November 8 state-wide election. CPA will be question 5 following four state-wide referendum questions. CPA is a local option tax that, if adopted, allows Shelburne to add a 3% surcharge to local property taxes to raise funds for community improvement projects – historic preservation, open space, recreation & community housing. Funds raised locally can be matched up to 100% with state funds generated from real estate transfer fees.

Information about the CPA ballot question will be presented in an online public forum on **Thursday, October 27 at 7:00 pm**. Join Zoom Meeting <https://us02web.zoom.us/j/9504232156?pwd=VFRRQU85VnV6NGFTS1E1dTBLy1RKQT09>

Meeting ID: 950 423 2156 Passcode: 022361

Volunteer Opportunities in Shelburne:

Looking for volunteers? Post your volunteer opportunity here! Want to Volunteer? Contact these folks:

Memorial Hall Association: Want to help renovate the Town's historic 400 seat Memorial Hall Theater, located on the 2nd floor of Town Hall? MHA is looking for board members eager to help launch a capital campaign. For more information, contact Jessica Murrow at murrjessica404@gmail.com

Shelburne Falls Porch Fest: Did you enjoy the 3rd annual Shelburne Falls Porch Festival last month? Want to help organize the 4th annual? Contact Paul Bennett at 4paulbennett@gmail.com

Shelburne Falls Women's Club is looking for new members. Contact Penny Spearance at 625-9639

Village Information Center: The center is open to visitors from 10am to 4pm Thursdays through Mondays from May through October and is fully operated by volunteers. The center hosts visitors who come from around the world, and more locally, who learn about what to see and do in western Franklin County and beyond. Many more volunteers are needed. Interested community members can drop in whenever the center is open, or leave a message of interest at 413-625-2544. Those who volunteer receive an orientation, learn about what the area has to offer, and get to greet and meet some of our interesting tourists.

Shelburne Finance Committee: Want to help shape and oversee the town budget? There are still two open seats on the Shelburne Finance Committee. Send your nomination to Town Administrator, Terry Narkewicz at townadmin@townofshelburne.gov Appointments to the FC are made by Town Moderator, Roland Giguere.

Other SF web sites and social media:

Find more news about Shelburne here:

<https://www.facebook.com/shelburnefallsvillagenetwork/>

<https://shelburnefalls.com/>

<https://the-senior-center.org/>

<https://www.facebook.com/MainStreetShelburneFalls>

<https://www.armslibrary.org/>

That's all we wrote. Send me news for November by Friday, October 28