

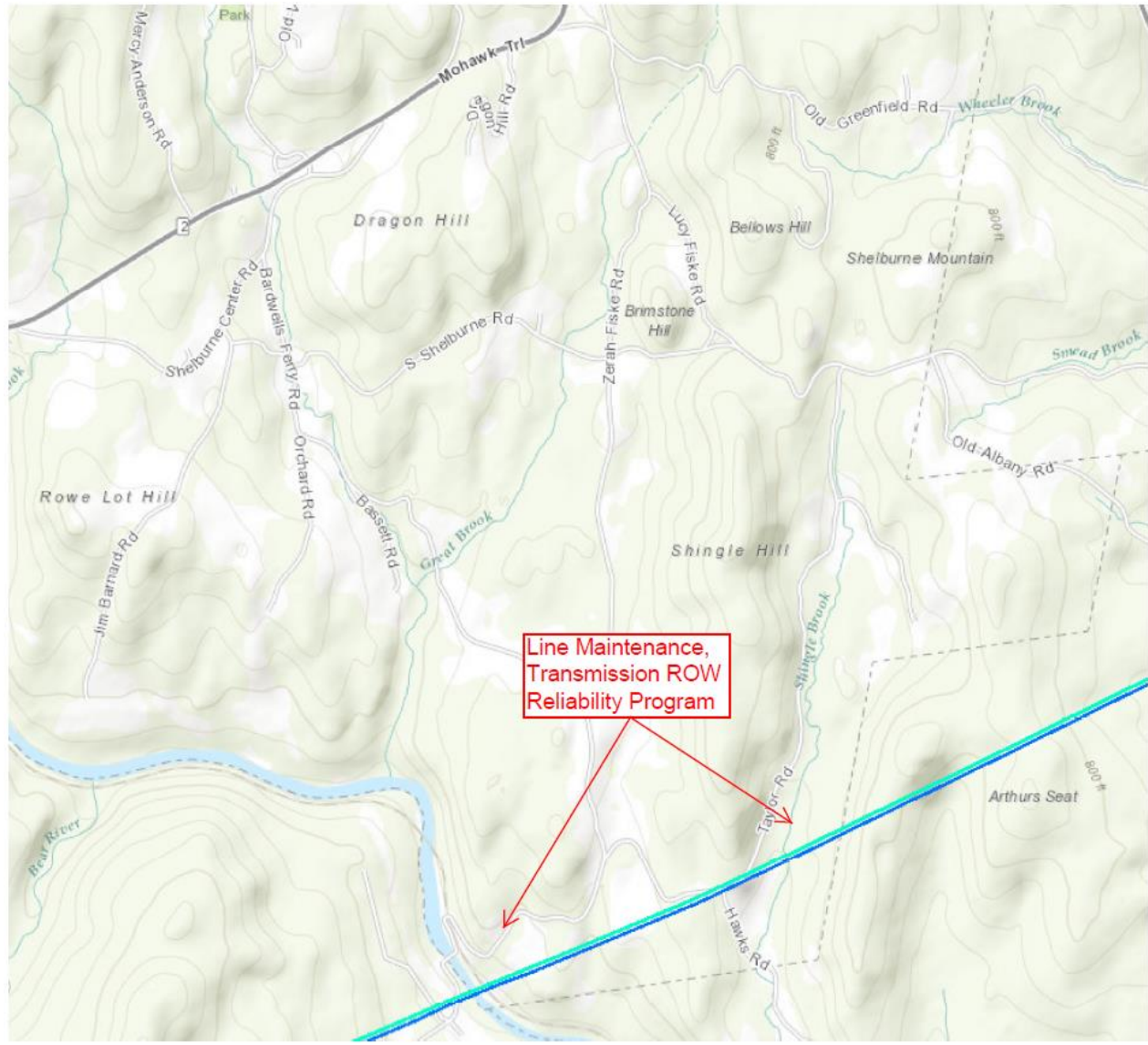
2017 Work in Eversource Transmission Rights-of-Ways

Town of Shelburne
08/30/2017

- Introductions
- 2017 Right-of-Way Work in Shelburne
 - Line Maintenance
 - Vegetation Maintenance
 - Transmission Right-of-Way Reliability Program (TRRP)



2017 Eversource ROW work in Shelburne





- As part of our continuing effort to deliver reliable energy, Eversource continually evaluates the condition of existing transmission structures across the system.
- Based on the condition of the structures on the 312/1242/1231 Line
- This existing line crosses Bardswell Ferry, Hawks, Taylor, and Guy Manners roads.
- Making the work site safe for the necessary equipment may require mowing, brush removal, making improvements to an access road, and bringing in gravel or wood timber mats.
- Areas disturbed by construction will be restored once the work is complete



- ROW Brush Control: Removal of vegetation within the cleared areas of the ROW.
- Side Tree Trimming: Management of vegetation encroachments into the ROW – involves pruning of trees and branches to maintain electrical safety clearances.
- Hazard Tree Removals: Removal of trees identified as being a risk to the transmission system. The trees might be within or outside of the easement limits. If the tree is outside the easement limits property owner permission is obtained.
- Schedule of work September – December 2017



Transmission ROW Reliability Program



Our approach to vegetation management

- Clear trees and other vegetation that may potentially interfere with the operation of the transmission facilities, including substations, structures and wires.
- Make the transmission corridor a sustainable, diverse habitat, with grasses, shrubs and low-growing trees that can safely coexist with transmission lines.

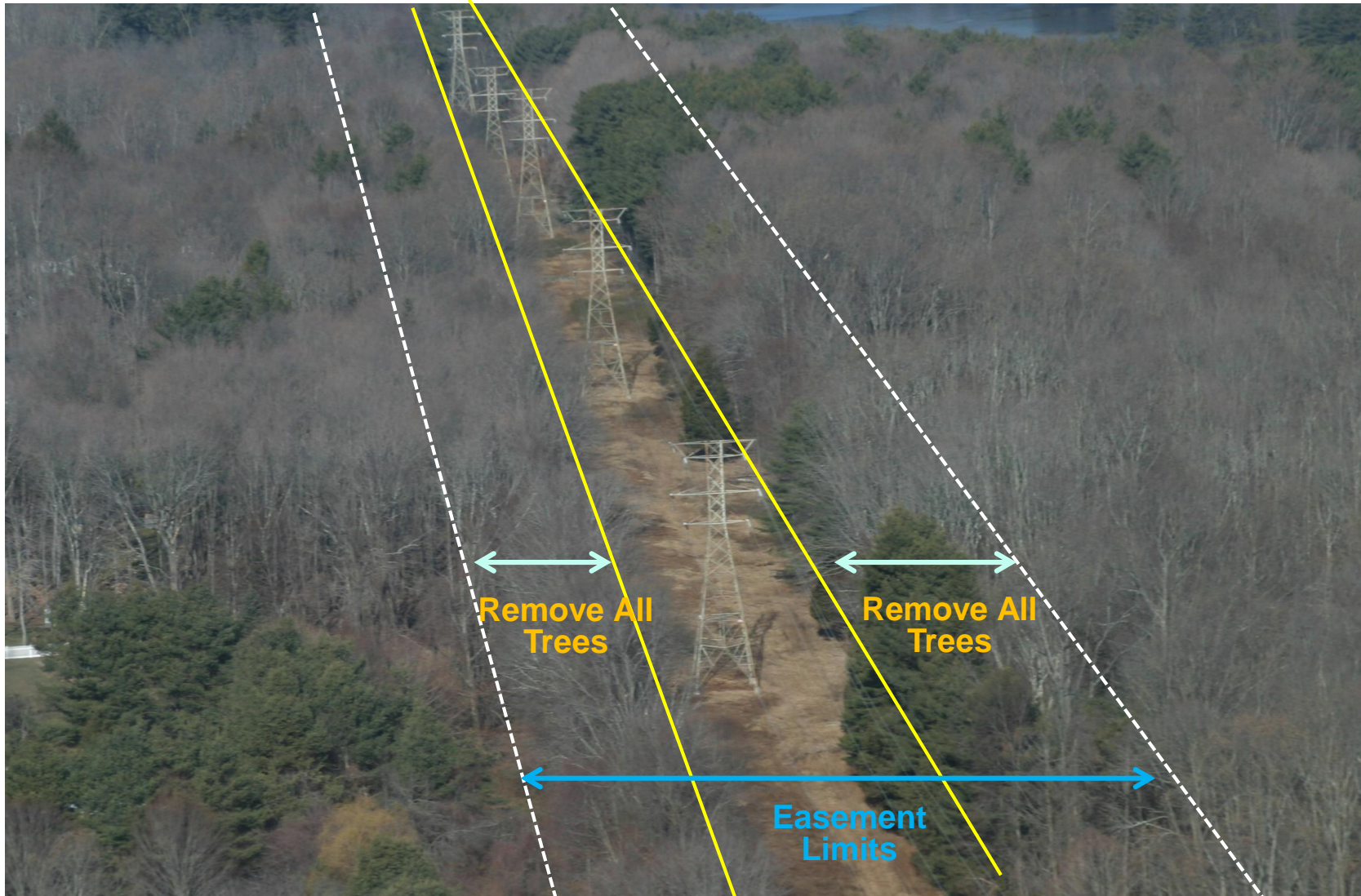
Transmission Right-of-Way Reliability Program (TRRP)

Why is this work needed?

- To protect the electric system, we will be removing tall-growing tree species thereby expanding the cleared area of the transmission rights-of-way.
 - These trees pose a serious safety hazard if they contact energized equipment.
 - Vegetation contact with transmission facilities may lead to power outages that could impact thousands of electric customers.
 - The clearing of trees in the rights-of-way will improve system performance, especially during severe weather.



TRRP - Typical clearing scenario



- Eversource will work closely with property owners to explain the impacts of the new clearing limits.
- Property owners can retain all or a portion of the wood from trees removed from their property.
- Any wood requested by the property owners will be left along the edge of right-of-way



Typical way wood is left for property owners

- Key stakeholders
 - Property owners/residents
 - Businesses
 - Local officials
 - State officials

- How we will communicate with key stakeholders
 - Briefings, presentations
 - Letters
 - Emails
 - Door hangers
 - Field meetings



TRRP Project timeline

- Brief municipal officials:
August 2017
- Begin outreach to property
owners: Ongoing
- Begin TRRP tree clearing:
December 2017



For the Public:

Hotline Number: 888-673-9943

Email: MAVegMaintenance@Eversource.com

Questions & Discussion

EVERSOURCE
ENERGY

